



# ADD-ON PATTERN FOR #1044 CAR COAT

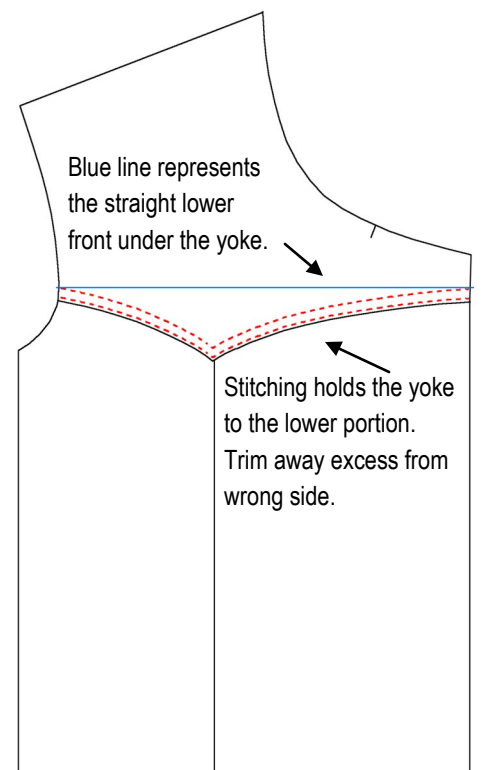
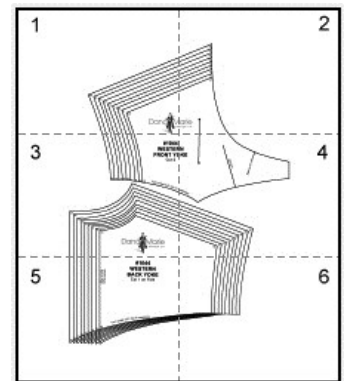
## WESTERN STYLE YOKE

This add-on is for converting the straight style yokes of the original pattern to a western look! It includes the western yoke pattern for front and back, and simple instructions to make the conversion.

Follow the patterns instruction booklet for all other construction steps.



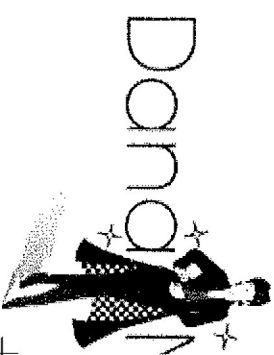
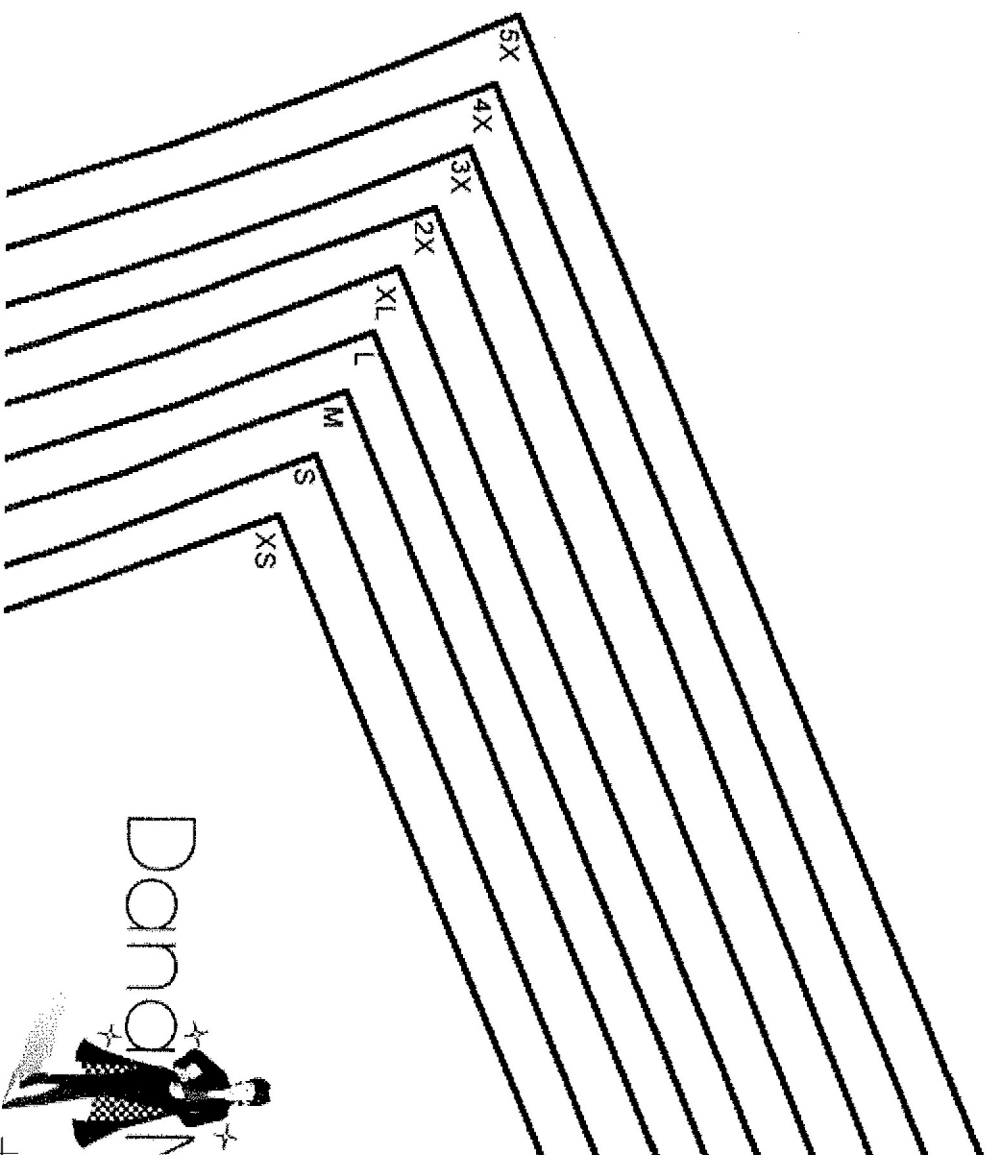
- 1) Assemble PDF pattern. Align registration marks keeping an eye on the pattern lines. It's better to have the pattern lines correct even if the registration marks are slightly off. Tape together and cut out Front and Back yoke pieces.
- 2) Cut out all pattern pieces from fashion fabric (follow pattern instruction booklet for layout, substituting western yoke for original one).
- 3) Turn under  $\frac{3}{8}$ " on the "V" portion of the yoke. Clip curve if necessary and press in place.
- 4) Lay Front Yoke over Lower Front having the folded under edge **even** with the  $\frac{5}{8}$ " stitching line at the outside edges and point of V over the seam line. Pin in place and topstitch through all thicknesses. Flip front over and trim away excess lower front (beyond stitching).
- 5) Repeat for Back Yoke and Lower Back.
- 6) Assemble garment as per patterns instructions.

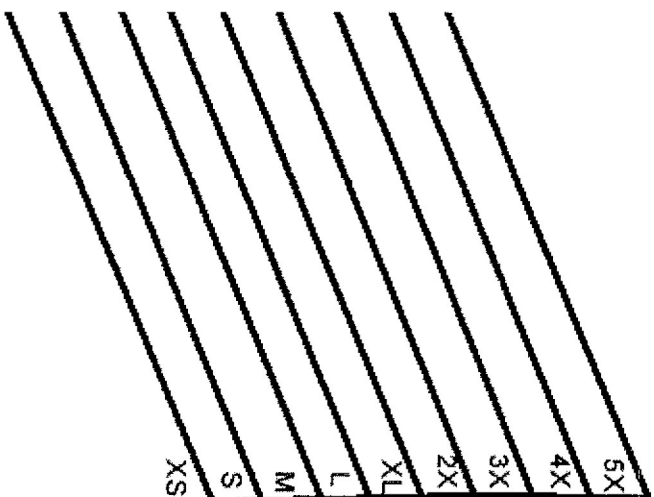


Copyright © Dana Bontrager for Dana Marie Design Co.

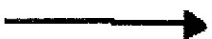
All rights reserved.

Including the right of reproduction in whole or in part in any form.

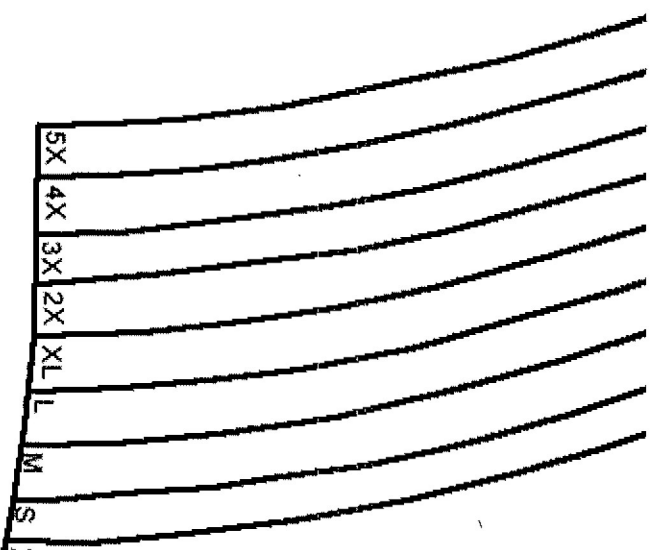




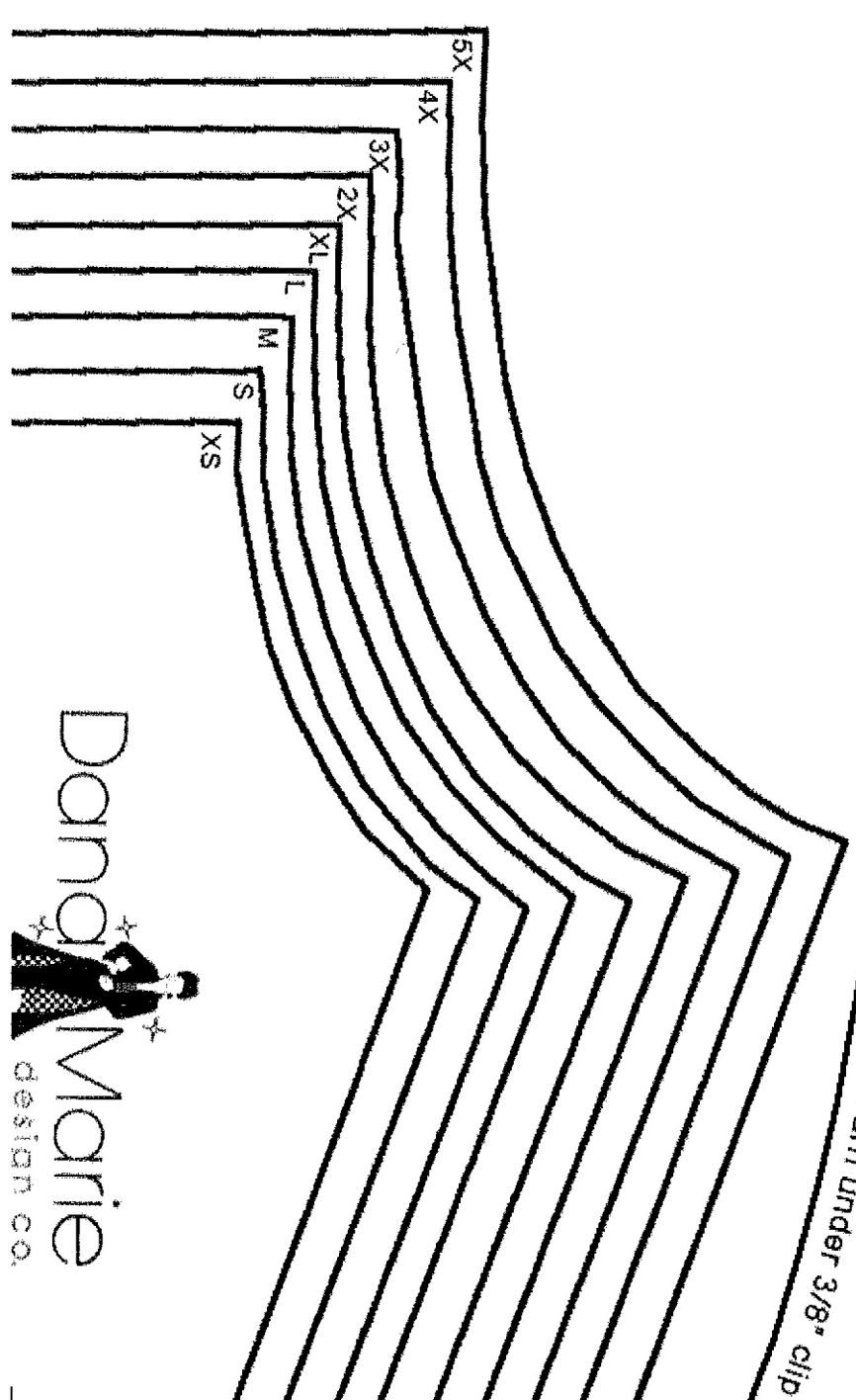
Marie  
design co.



**#104**  
**WESTE**  
**FRONT Y**  
 Cut 2



Turn under 3/8" clip



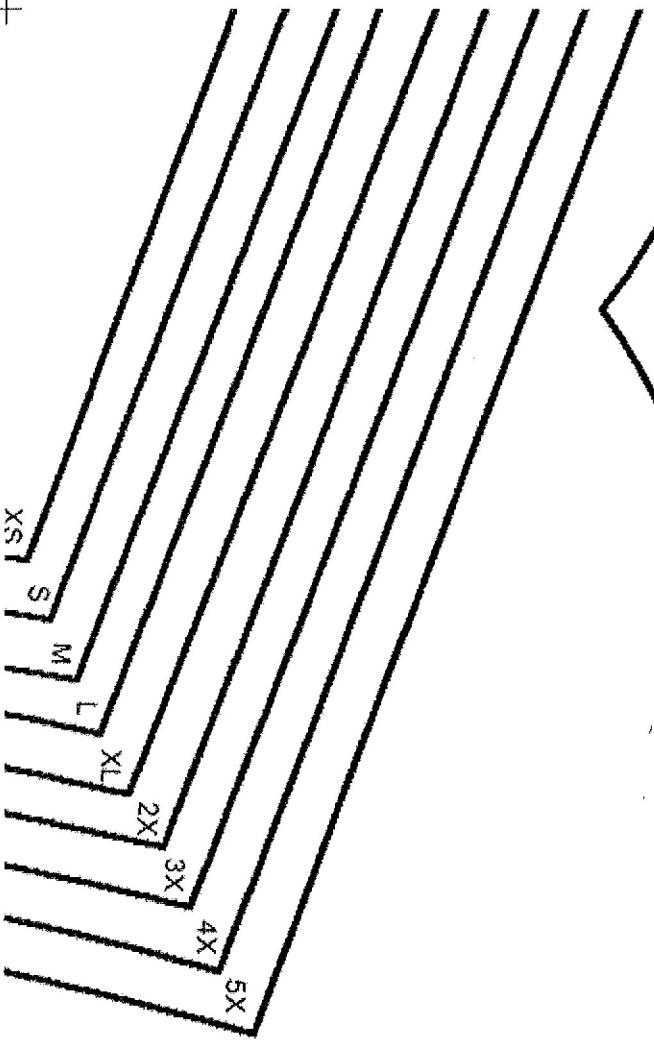
4  
:RN  
/OKE



*If necessary*

Roll line

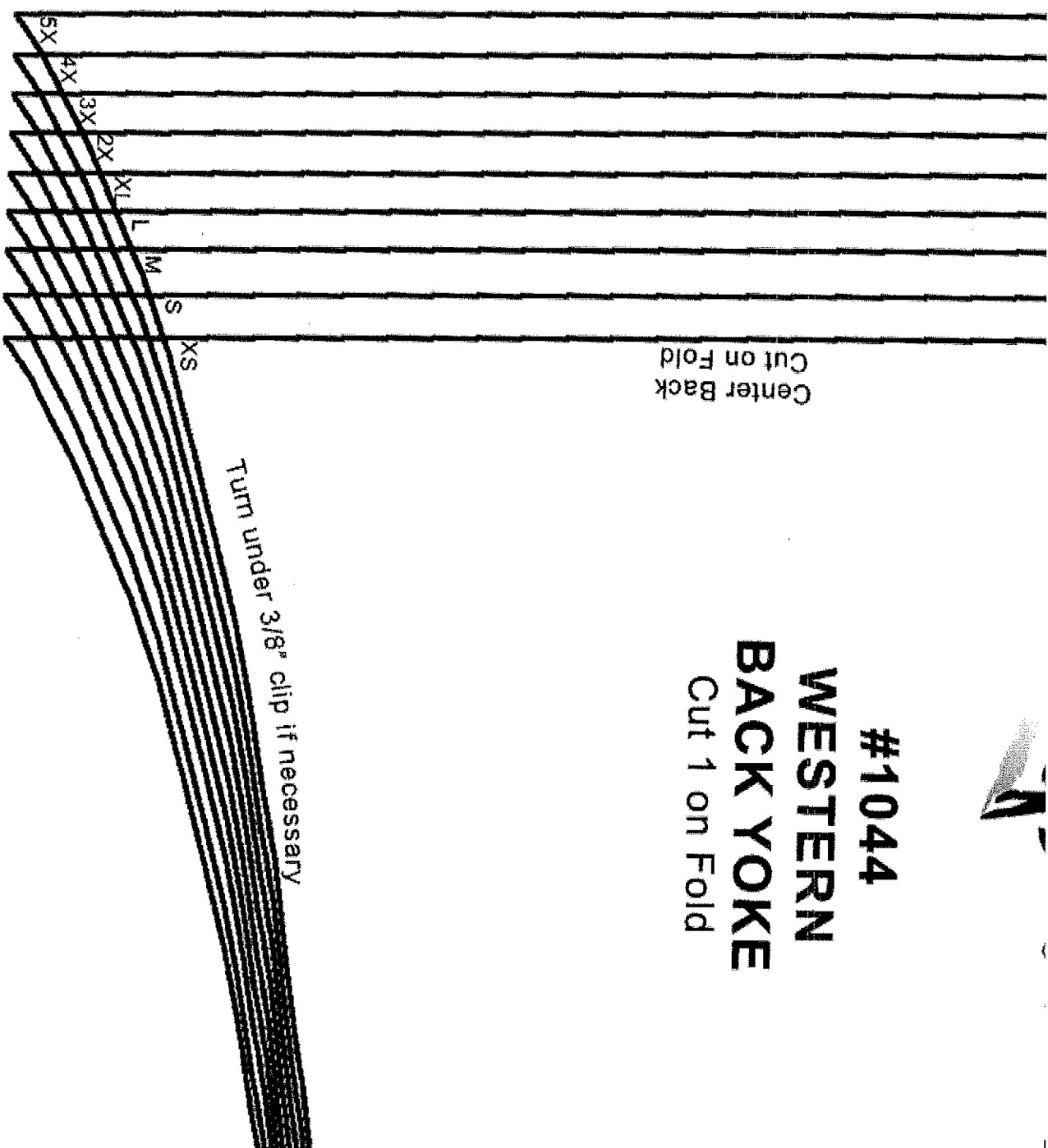
Marking for collar



Center Back  
Cut on Fold

**#1044**  
**WESTERN**  
**BACK YOKE**  
Cut 1 on Fold

Turn under 3/8" clip if necessary



+

