

#1064  
Opposites  
Attract

Reversible  
jacquard.

# #1064 Opposites Attract

## Jacket Conversion with Double Sided Fabric

With a few simple changes, this easy pullover top becomes a stunning jacket!

You'll follow the pattern instructions for basic construction.



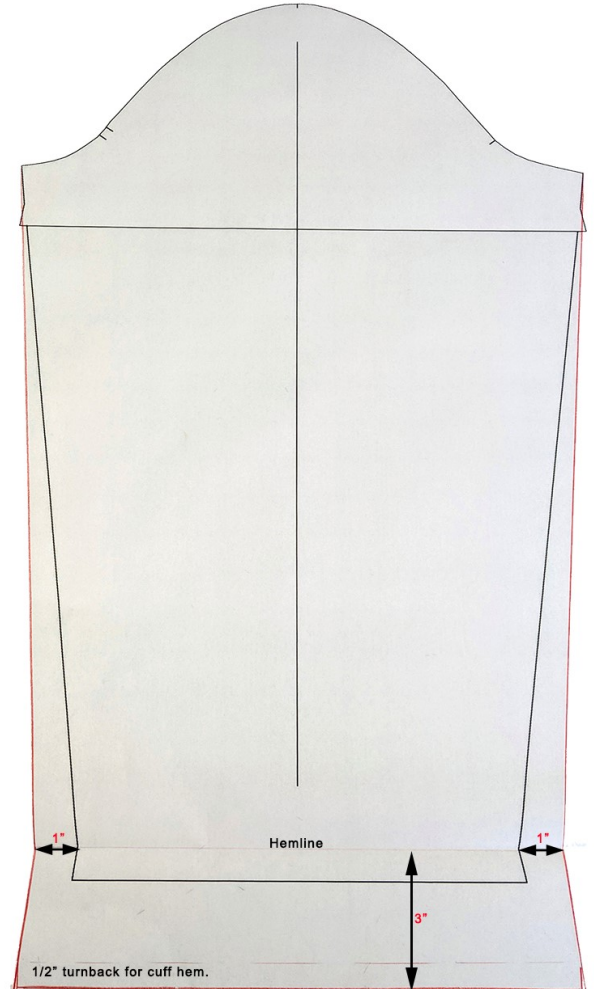
As a jacket with cuffs.

First, I widened the sleeve (for a more comfortable fit over garments) and added a cuff for fun!

Add 1" of width at each seam at the hemline. Draw a new seam line.

Add 3" from hemline for the cuff (finished cuff will measure 2 1/2" in depth).

Press 1/2" down on the edge of the sleeve, this will finish the edge of the cuff. I like to use Steam a Seam fusible tape that will hold this edge in place.



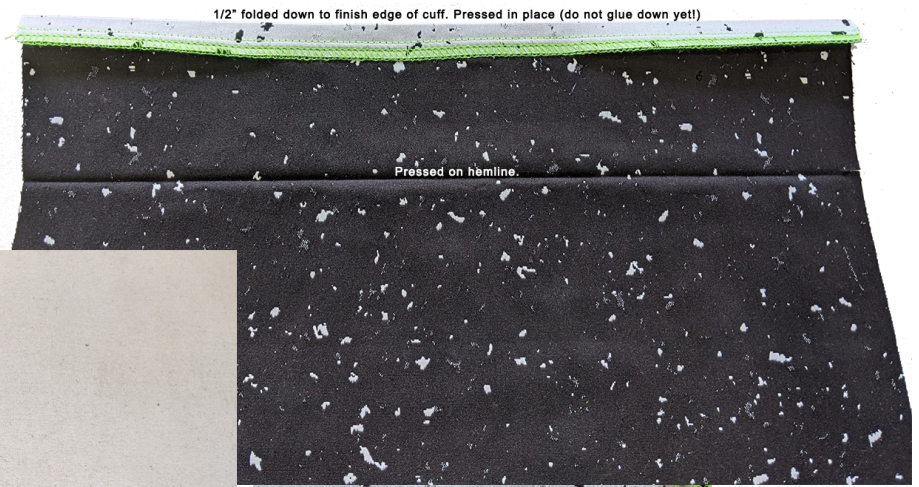
Steam A Seam tape applied to the 1/2" turn back on the cuff.





Press the sleeve on the hemline, marking the cuff.

Press the cuff while the sleeve is flat, makes it easy for construction later!



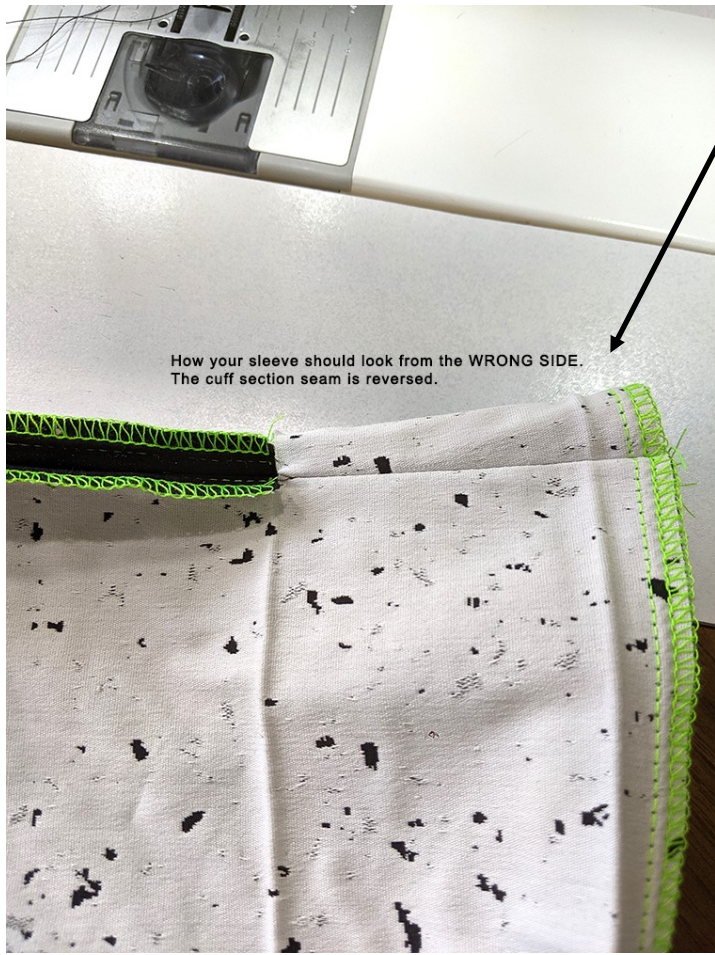
When you sew the sleeve seam (right sides together), stitch JUST to the hemline marking, and backstitch. Clip to stitching.



With WRONG sides together, sew the remaining cuff seam.

Press seams open. Remove the paper tape from the Steam a Seam and press the 1/2" to finish the top of the cuff.





How your sleeve should look from the WRONG SIDE.  
The cuff section seam is reversed.

Looking at the sleeve from the WRONG side, your cuff section should look like this.

And how it looks from the RIGHT side, with the cuff ready to turn back.



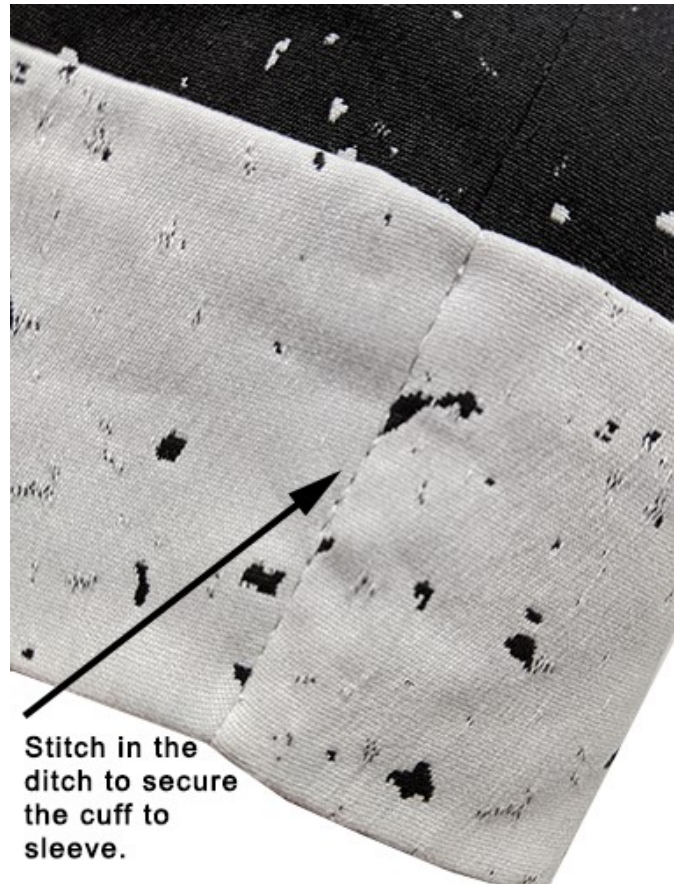
And how your sleeve should look from the RIGHT SIDE.  
The cuff will fold up hiding its seam allowance.



The finished cuff is neat and tidy!

The finished cuff looks perfect!

Stitch in the ditch of the seam to secure the cuff.



Stitch in the ditch to secure the cuff to sleeve.



#1064  
Opposites  
Attract

Reversible  
jacquard.



As a jacket with cuffs.

#1064  
Opposites  
Attract



As a jacket worn open.

#1064  
Opposites  
Attract



#1064  
Opposites  
Attract

